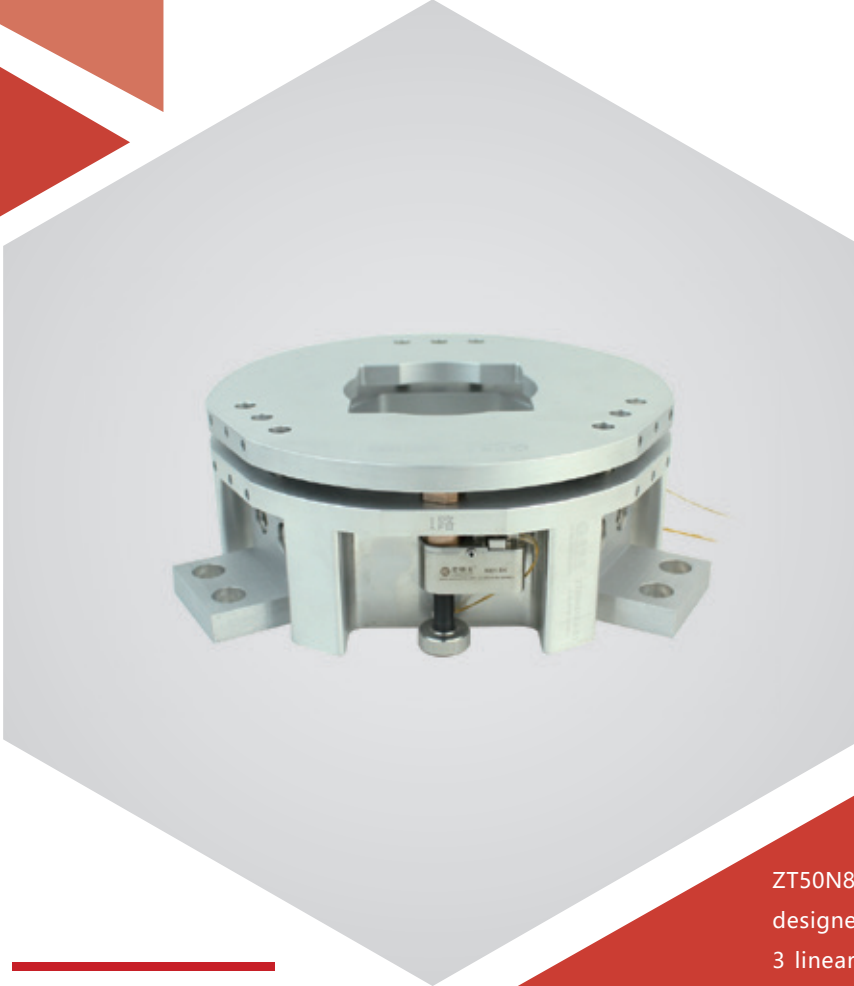


θ_x θ_y Z axes | ZT50N81K8

Piezoelectric Screw Leveling Platform



Applications >>

- Three-dimensional deflection motion
- Sub- μ rad angular resolution
- Power-off self-locking
- More flexible with motorized operation

Characteristics >>

- Scientific research
- Three-axis leveling
- Wafer leveling
- Laboratory system construction
- Industrial application
- Optics

Introduction

ZT50N81K8 piezoelectric screw leveling platform is designed specifically for three-axis leveling. It has 3 linear actuation points, for two-dimensional θ_x , θ_y deflection and Z-direction lifting to adjust the platform, It can be applied to different applications under various conditions.



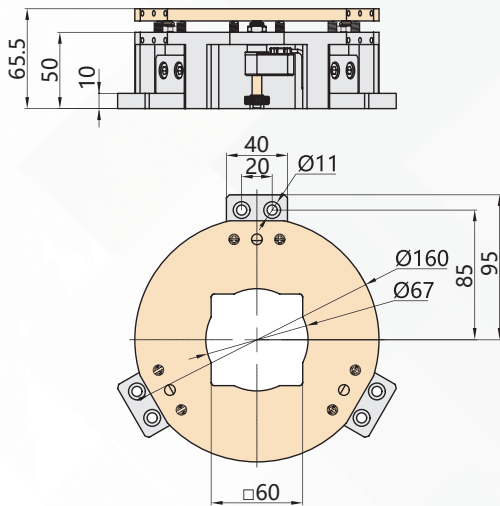
Harbin Core Tomorrow Science & Technology Co., Ltd.

Tel: +86-451-86268790 Email: info@coremorrow.com
Fax: +86-451-86267847 Web: www.coremorrow.com

Headquarters: Building I2, No.191 Xuefu Road, Nangang District, Harbin
Shanghai Office: Building 2, No.608 Shengxia Road, Pudong District, Shanghai

Technical Data >>

Type	XYZ72SN81K13	Units
Platform diameter	160	mm
Active axes	θ_x, θ_y, Z	
Actuator number	3	pcs
Tilt range	± 1.5	$^{\circ}$
Linear travel	3	mm
Motion direction	Z	
Angular resolution	0.3	μrad
Load capacity	2	kg
Actuator type	Piezo screw actuator	
Operating temperature	10~40	$^{\circ}\text{C}$
Mass	1800	$\text{g} \pm 5\%$
Recommended controller	E53.C4K	
PZT connector	RJ11	

Drawing >>

Recommended Controllers >>


E53.C4K
 4 control interfaces
 digital control
 USB and serial port communication



Harbin Core Tomorrow Science & Technology Co., Ltd.

Tel: +86-451-86268790 Email: info@coremorrow.com
 Fax: +86-451-86267847 Web: www.coremorrow.com

Headquarters: Building I2, No.191 Xuefu Road, Nangang District, Harbin
 Shanghai Office: Building 2, No.608 Shengxia Road, Pudong District, Shanghai